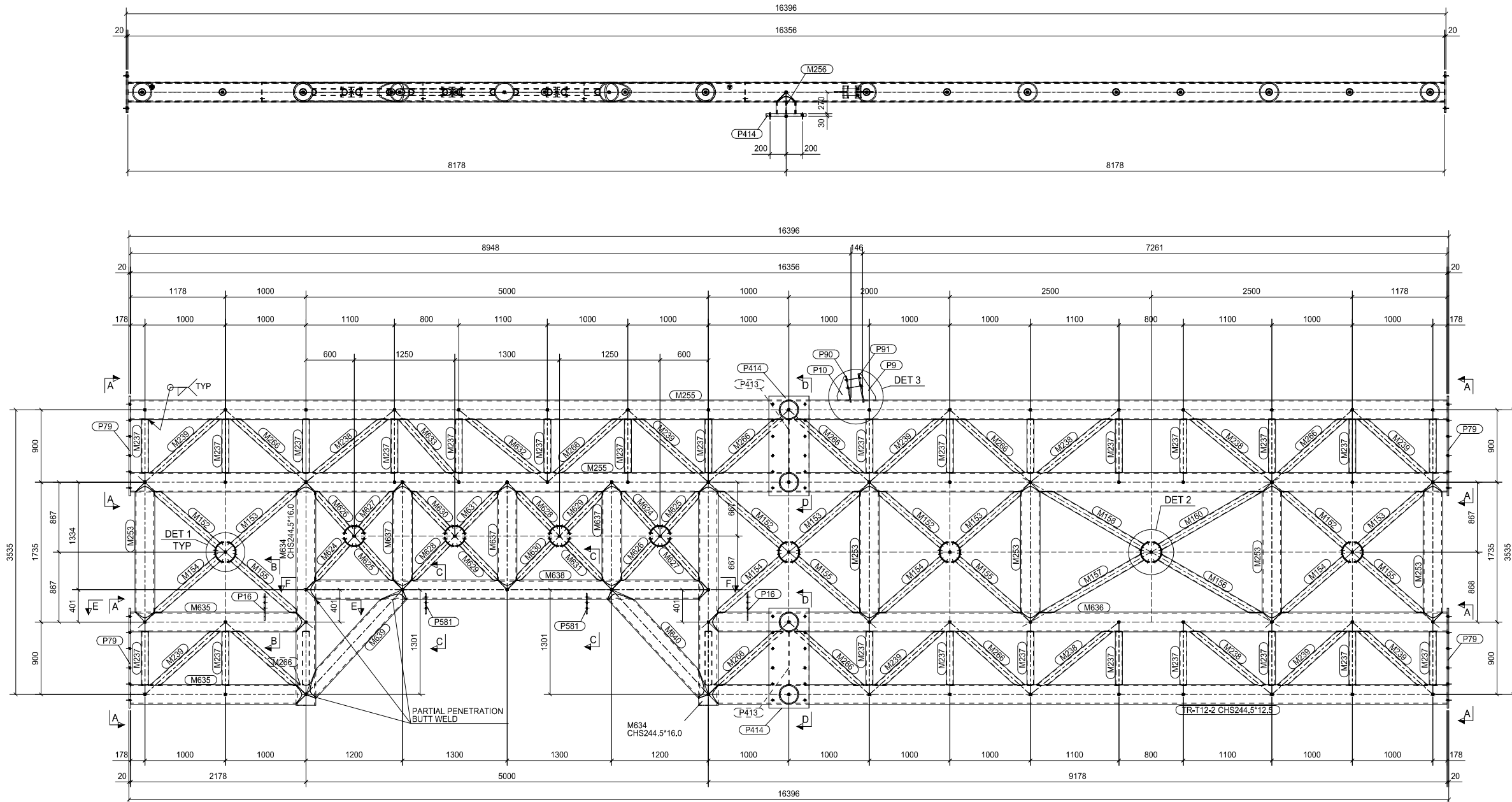


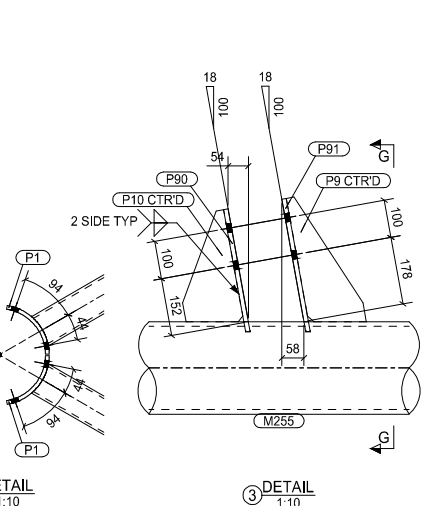
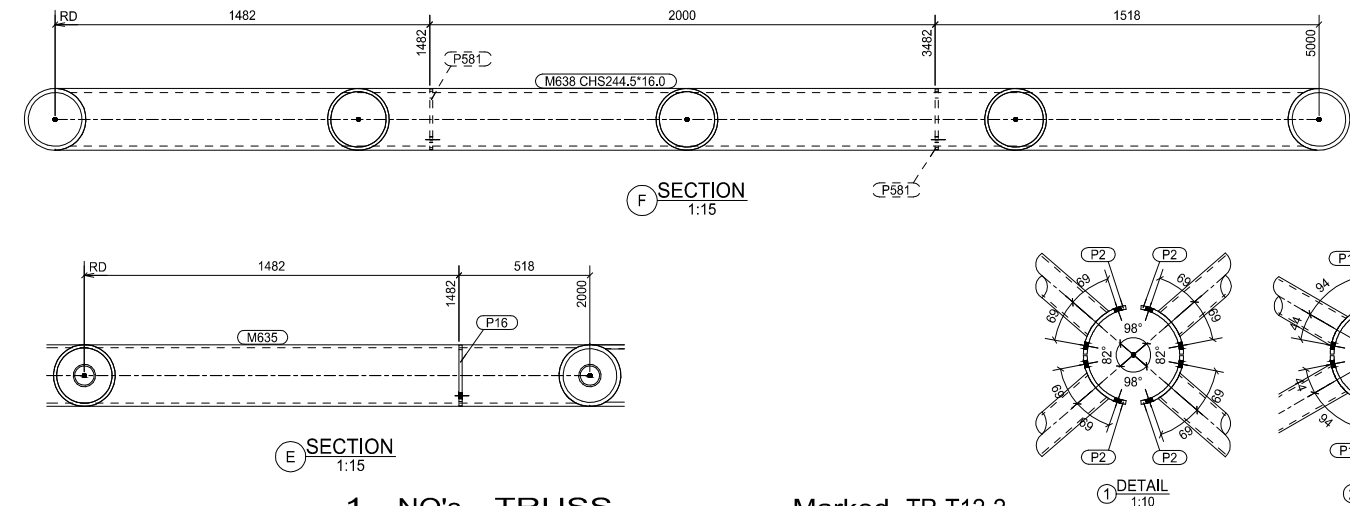
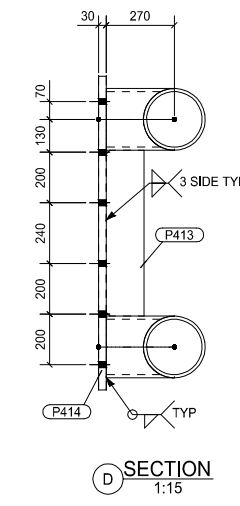
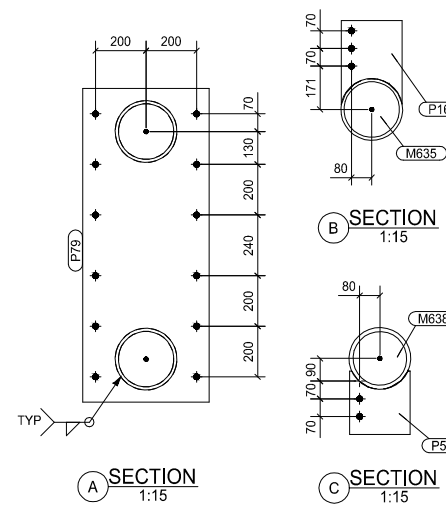
LOCATION LIST table with columns MARK NO., GRID LOCATION and values TR-T12-2, 23b/Mb-Kb.

GENERAL NOTES: ALL HOLES ARE 22.0 mm UNLESS NOTED. ALL WELDS ARE 6 mm F.W UNLESS NOTED.



MATERIAL LIST FOR ONE ASSEMBLY MK'D. Table with columns Mark, Size, Grade, No., Length, Area, Weight and a total row.

BOLT LIST FOR ASSEMBLY MK'D. TR-T12-2. Table with columns DIAMETER, GRADE, TYPE, LENGTH, No., MEMBER.



FOR DETAILS OF PARTS REF. DWG. NO. RAS-348-SL-TR-T12-2 SHT. 2 OF 2

NOTES table and a revision table with columns Rev, Description, DATE, DRAWN, CHKD.

RASANA ENGINEERING IND. CO. LTD. contact information including address in Sharjah, UAE.

GHANTOOT TRANSPORT & Gen.Cont.Est. (Building Division) contact information including address in Dubai, UAE.

MORGANTI INTERNATIONAL DIVISION contact information including address in Dar Al-Omran, Jordan.

DAR AL-OMRAN Planners Architects Engineers contact information including address in Dar Al-Omran, Jordan.

RAMAHI Engineering Consultancy contact information including address in Abu-Dhabi, U.A.E.

CLIENT: EMIRATE OF ABU DHABI JUDICIARY DEPARTMENT. PROJECT TITLE: ABU DHABI COURT HOUSE COMPLEX PROJECT. SKY LIGHT DET. OF TRUSS TR-T12-2 Sht 1of2. Includes logos and project details.